

# LAMOTTE & ANDREW

TELEPHONE CO.

NEIGHBORS  
SERVING  
NEIGHBORS!

SEPTEMBER 2022

## CUSTOMER APPRECIATION PICNIC 2022

Thanks again everyone for your continued support. The Customer Appreciation Picnic was held in Andrew on August 2nd. It was a huge success! Big prize winners were: Pete Saeugling - Apple AirPods Pro, Robert Lochner & Dawn Patterson - \$100 Gift Cards, Dave Reed - 8" Echo Show, David Hankemeier & Juanita Schlarman - \$50 Gift Cards.



**CONTACT US**

563-773-2213  
563-672-3277  
info@lamotte-telco.com

**OFFICE HOURS**

400 PINE ST  
LA MOTTE IA 52054  
7:30 - 4:30 MON - FRI  
(12 - 1 closed for lunch)

**DROP BOXES**

ANDREW - 18 W BENTON  
(door slot Central Switch)

LA MOTTE - 400 PINE  
(entrance of driveway)

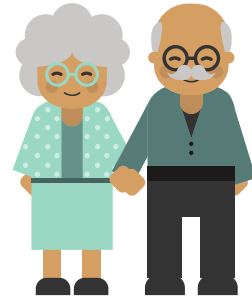
**PAYMENT INFO**

Payments due upon receipt.  
\$1 late fee for payments  
after 20th of the month.  
Services subject to dis-  
connection for nonpayment.  
\$30 reconnect fee.

**SEPTEMBER 2022**

**A SPECIAL THANK YOU TO THE FOLLOWING COMPANIES FOR DONATING PRIZES AT OUR CUSTOMER APPRECIATION PICNIC:**

**CHEERS TO THE ANDREW CAFE FOR CATERING THE WONDERFUL MEAL**



**HAPPY GRANDPARENTS' DAY  
SEPTEMBER 11TH**

**OFFICE CLOSED  
LABOR DAY  
MONDAY, SEPTEMBER 5, 2022  
24/7 TECH SUPPORT AVAILABLE  
AT 800-205-1110**

**YOU CAN'T AFFORD TO CUT  
A FIBER OPTIC CABLE  
CALL BEFORE YOU DIG**



Remember to call Iowa One Call before doing any digging or burning. La Motte & Andrew Telephone Company has put many miles of new fiber optic cable in the ground in recent years—don't assume you know where the cable is!

***Damage to fiber optic cable can quickly add up to \$10,000 or more per incident.***

Do your part to help us protect the underground utilities that we all rely on: Call Iowa One before you dig: 1-800-292-8989

**Iowa One Call is a free service to you**

**FOR EMERGENCY SERVICE OR HELP ANYTIME -- 24/7 TECH SUPPORT: CALL 1-800-205-1110**

General Manager: JoAnne Gregorich  
Service Technicians: Rod Engler, Mike Olsen,  
Dennis Dunne, Marilee Aschenbrenner  
Customer Service Reps: Carla Ehlers, Tonya  
Felderman, Sherry Theisen  
Email: [info@lamotte-telco.com](mailto:info@lamotte-telco.com)



**FOLLOW US  
FOR UPDATES  
& INFO**